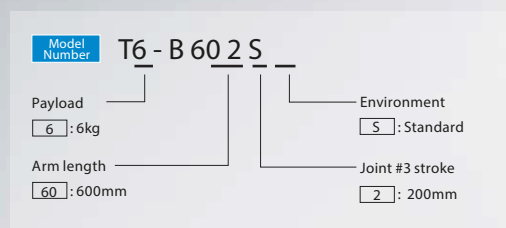


T6-B

Cost-efficient automation solution that is versatile for handling multiple workpieces and heavier loads

- Built-in controller for simplified setup and reconfiguration
- High energy efficiency reduces factory operating costs
- Batteryless motor unit reduces running costs and factory downtime
- Ideal for easy automation of manual pick-and-place tasks with a payload of up to 6kg



Specifications

Model Name		T6-B
Model Number		T6-B602S
Arm length	Joints #1+#2 (mm)	600
Payload* 1	Rated (kg)	2
	Maximum (kg)	6
Repeatability	Joints #1+#2 (mm)	± 0.04
	Joint #3 (mm)	± 0.02
	Joint #4 (deg)	± 0.02
Standard cycle time* 2	(sec)	0.46 *3
Max. motion range	Joint #1 (deg)	± 132
	Joint #2 (deg)	± 150
	Joint #3 (mm)	200
	Joint #3 (deg)	± 360
Max. operating speed	Joints #1-#2 (mm/s)	4180
	Joint #3 (mm/s)	1000
	Joint #4 (deg/s)	1800
Joint #4 allowable moment of inertia *4	Rated (kg·m ²)	0.01
	Max. (kg·m ²)	0.08
Joint #3 down force	(N)	83
Installation environment		Standard (IP20)
Mounting type		Table Top
Weight (cables not included)	(kg) or less	21 kg : 46 lb
Applicable Controller		Built-in controller
Installed wire for customer use		Hand I/O: IN6/OUT4 (D-sub 15pin), User I/O: IN18/OUT12
Installed pneumatic tube for customer use		ø6 mm x 2, ø4mm x 1 : 0.59 MPa (6kgf/cm ² : 86 psi)
Power / cable length		AC100-240V / 5m
Power Consumption * 5	(kVA)	1200VA
Safety standard		CE, KC

*1 : Do not apply the load exceeding the maximum payload

*2 : Cycle time based on round-trip arch motion (300mm horizontal, 25mm vertical) with 1 kg payload (path coordinates optimized)

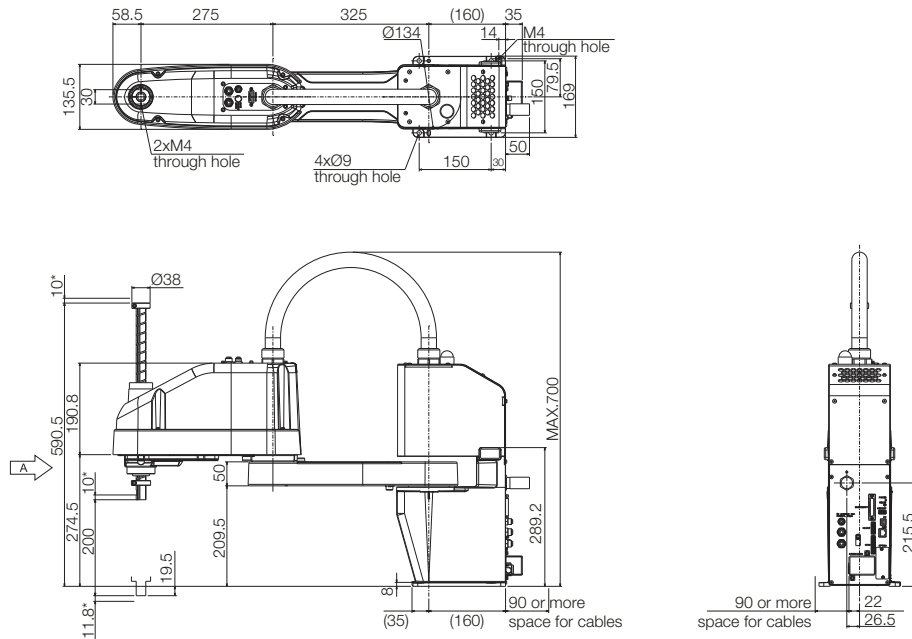
*3 : Cycle time based on round-trip arch motion (300mm horizontal, 25mm vertical) with 2 kg payload (path coordinates optimized)

*4 : Set the parameters by the Inertia command according to the load and effector status (refer to the instruction manual for t

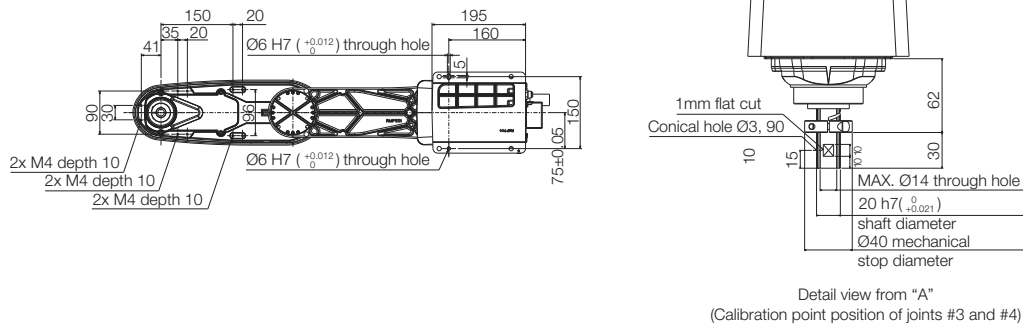
*5 : It depends on operating environment and operation program.

for maximum speed).
for maximum speed).
he parameter calculation method).

■ Outer Dimensions (Table Top Mounting) [Unit: mm]



(*) indicates stroke margin by mechanical stop.



■ Motion Range (Table Top Mounting) [Unit: mm]

